

Poverty Measurement in the Philippines¹

Lisa Grace S. Bersales
National Statistician
Philippine Statistics Authority

¹ presented at the Side Event on Multidimensional Poverty Measurement, 46th Session of the UN Statistical Commission

Official Poverty Statistics in the Philippines

- Highly anticipated by many stakeholders
- Income-based
- Compared with self-rated poverty statistics by a private group
- Need to capture other dimensions
- Technical Committee on Poverty Statistics provides guidance



REPUBLIC OF THE PHILIPPINES
PHILIPPINE STATISTICS AUTHORITY -
NATIONAL STATISTICAL COORDINATION BOARD

[HOME](#)

[NEWS](#)

[STATISTICS](#)

[EVENTS](#)

[PRODUCTS AND SERVICES](#)

[CONNECT WITH US](#)



**2006 Input-Output
Accounts of the Philippines**
released December 2014



**Philippine Statistical Act of
2013 and its IRR**
RA No. 10625



**Philippine Statistical
Yearbook**
2014 Edition

StatWatch >>

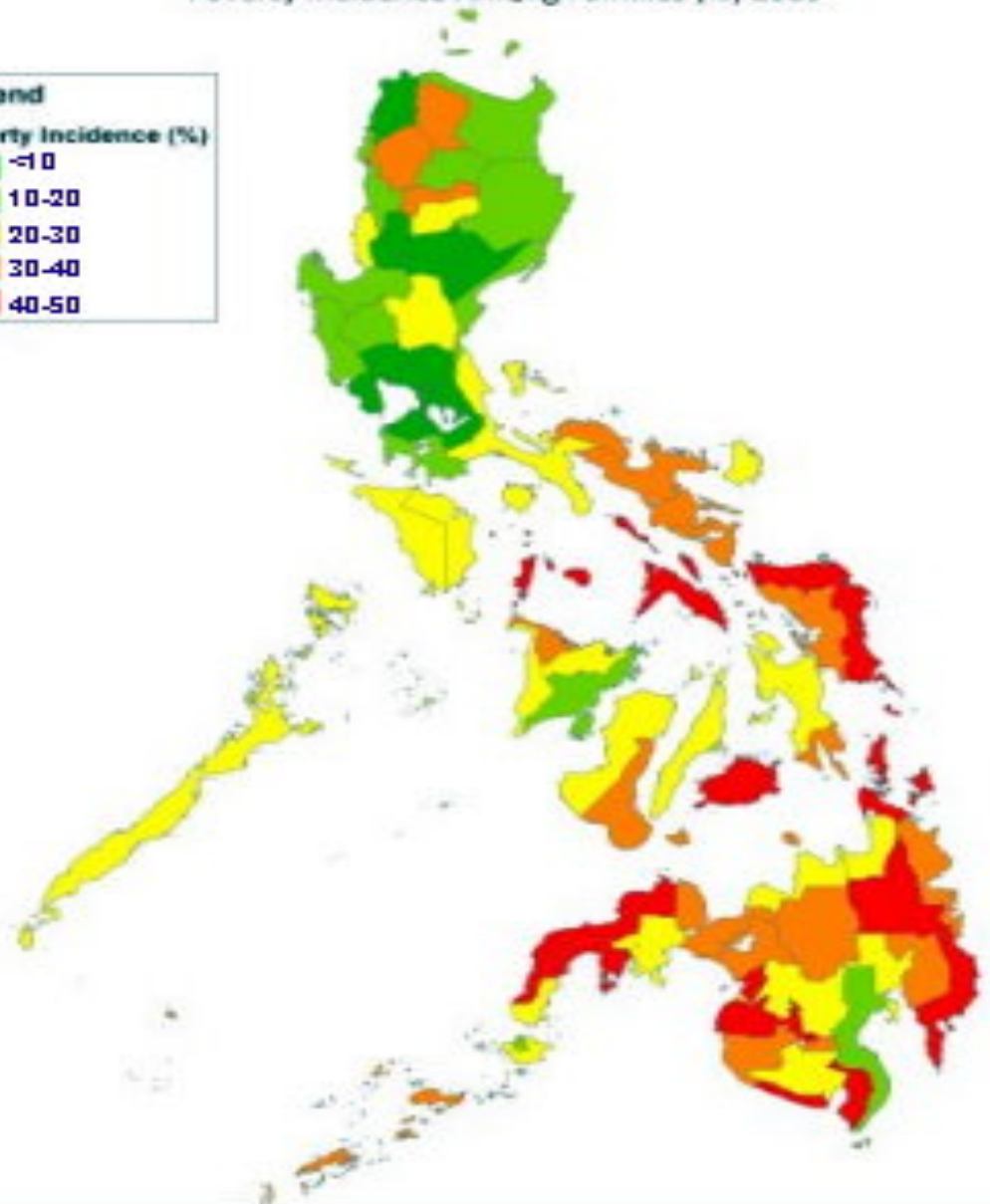
<u>GDP Growth</u> (2000=100) (4th Qtr 2014)	6.9%
<u>GNI Growth</u> (2000=100) (4th Qtr 2014)	6.3%
<u>Poverty Incidence</u> Families (1st Sem. 2013)	19.1%
Population (1st Sem. 2013)	24.9%
<u>Per Capita Poverty Threshold</u> (1st Sem. 2013)	P9,626
<u>Inflation Rate</u> (Headline, Jan 2015)	2.4%
<u>Population</u> (as of 1 May 2010)	92.34 M
<u>Population Projection</u>	97.35 M

[▲ ▼ Full Version](#)

[Latest News and Articles >>](#)

[Notice](#)

Poverty Incidence Among Families (%) 2009

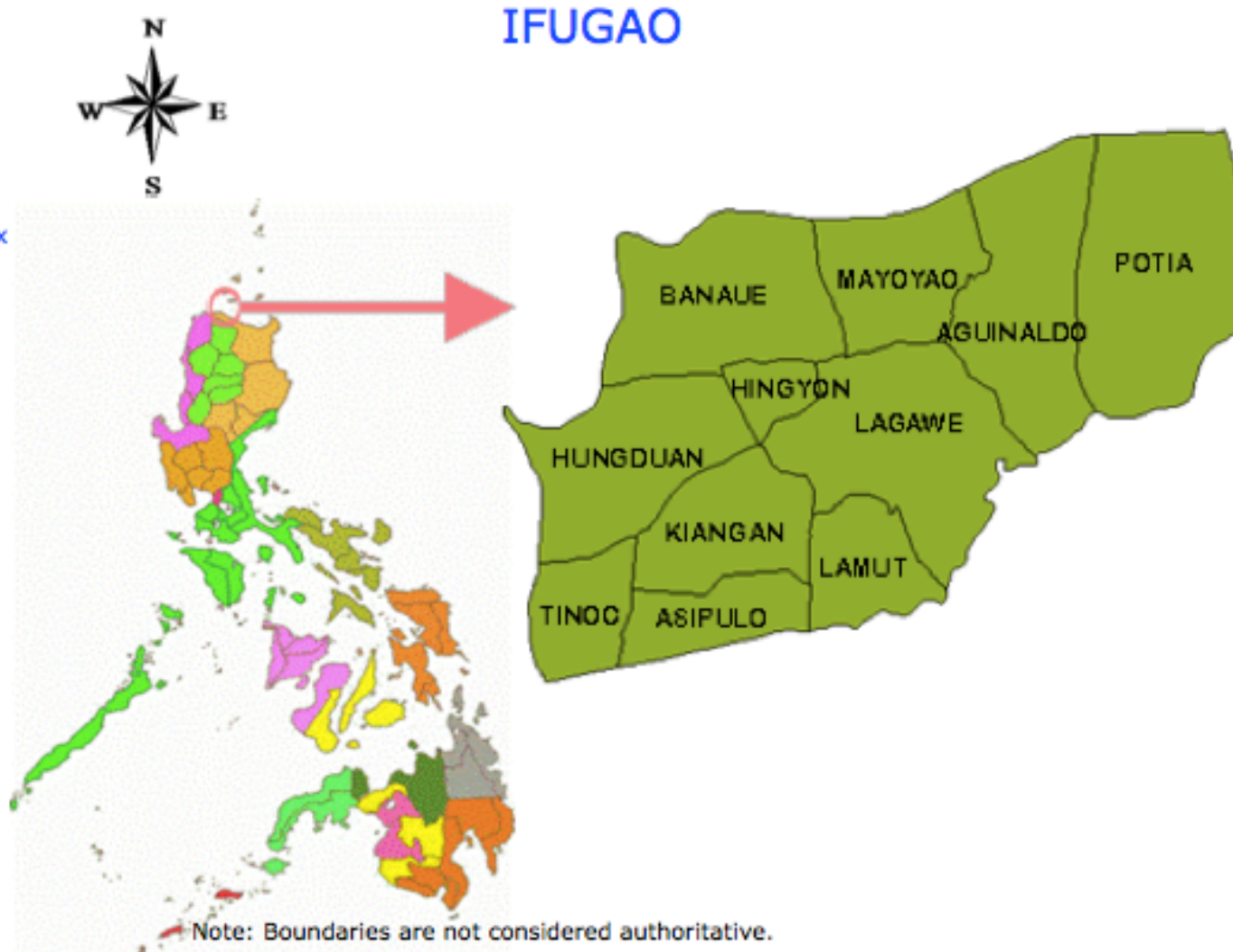


Enabling

Survival

Security

Poverty Index
Map



IFUGAO

PROVINCIAL/CITY POVERTY MAPS:

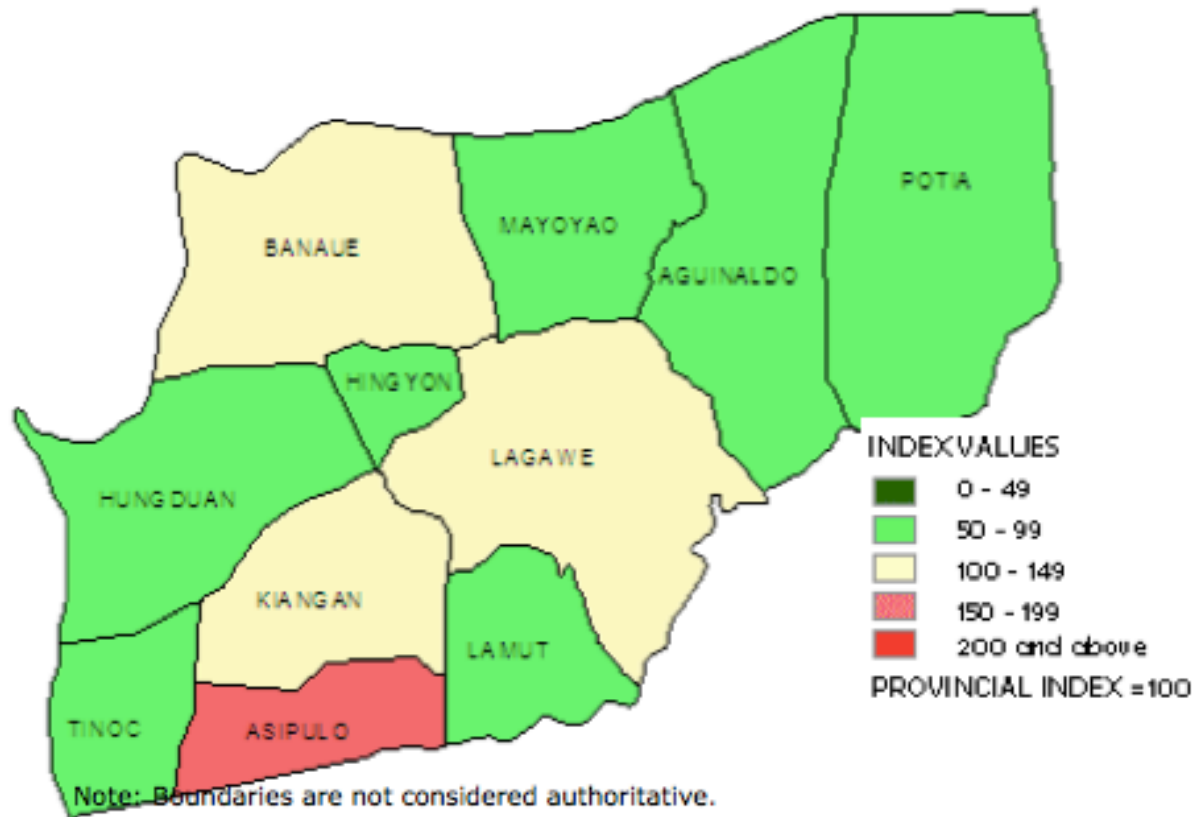
- Abra
- Apayao
- Baguio City
- Benguet
- Ifugao
- Mt. Province

MUNICIPAL POVERTY MAPS

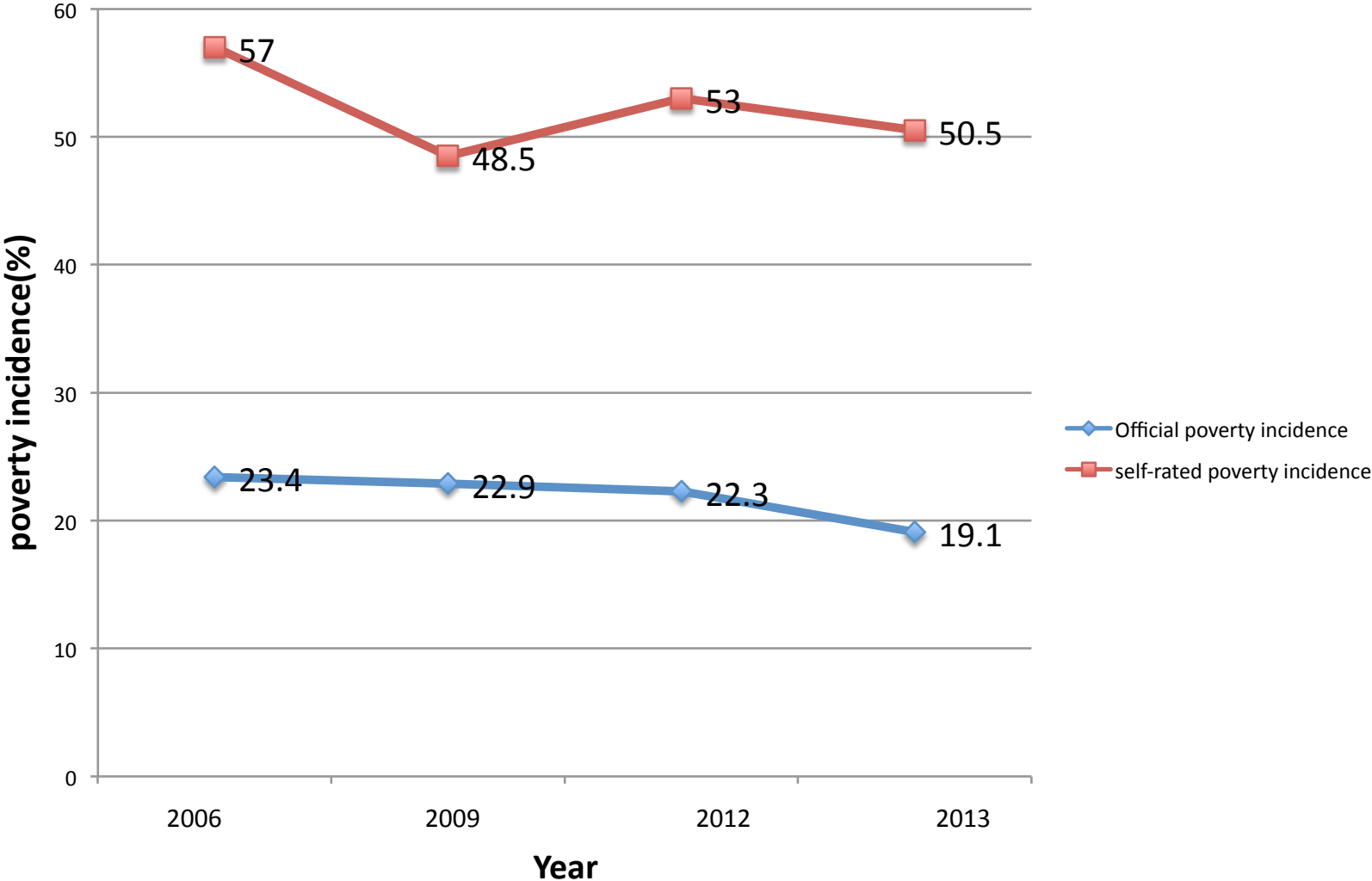
- Kapangan, Benguet
- Kibungan, Benguet
- Natonin, Mt. Province
- Natonin CBMS



Poverty Index Map Ifugao, C.Y. 2000



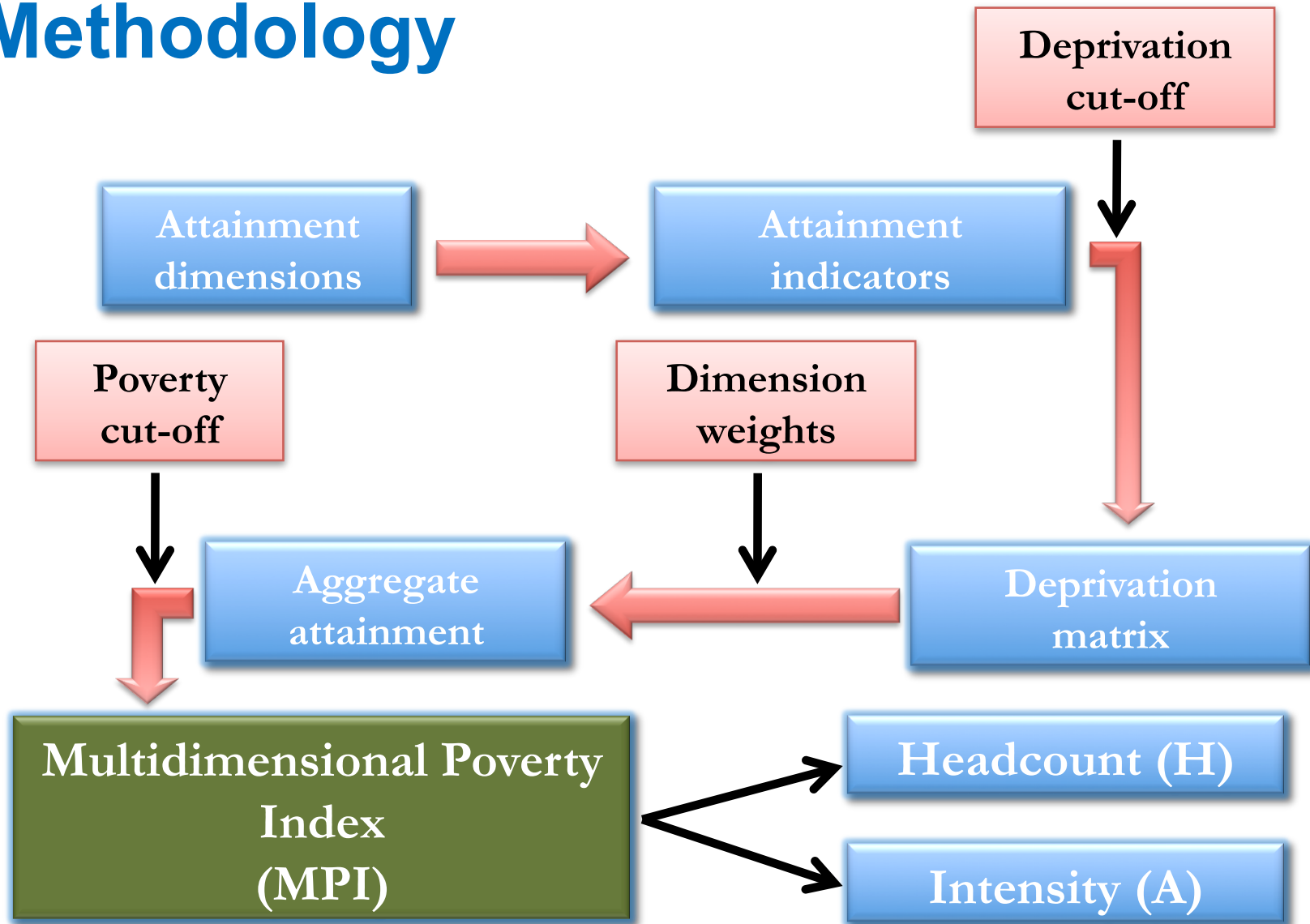
Poverty Incidence for Families Philippines



Study by Planning Minister

- Multidimensionality of poverty: No longer debatable
 - “Multiple deprivations of different kinds... experienced simultaneously by the poor”
 - “beyond growth much needs to be done to make development more inclusive “
- No one-for-one correspondence between income poverty & other deprivations
- Increasing demand from policy makers
- New methodologies exist
- Alkire-Foster methodology >> dashboard of dimensions of poverty

Methodology



Source: Balisacan(2014) What has really happened to poverty in the Philippines?
and Edillon(2014), Multidimensional Poverty

Nationally representative surveys

DATASET	YEARS AVAILABLE
National Demographic and Health Survey (<i>NDHS</i>)	1993, 1998, 2003, 2008
Family Income and Expenditure Survey (<i>FIES</i>)	1988, 1991, 1994, 1997, 2000, 2003, 2006, 2009, 2012
Annual Poverty Indicator Survey (<i>APIS</i>)	1998, 2002, 2004, 2007, 2008, 2010, 2011, 2013*

**Unit record data not yet available at the time of study*

Weights

	Health	Education	Standard of Living
Weight	1/3	1/3	1/3
<i>Components (equal weights, nested)</i>			
NDHS	2 (2)	2	4
FIES	2 (3)	2	5 (7)
APIS	2 (3)	2	4 (7)

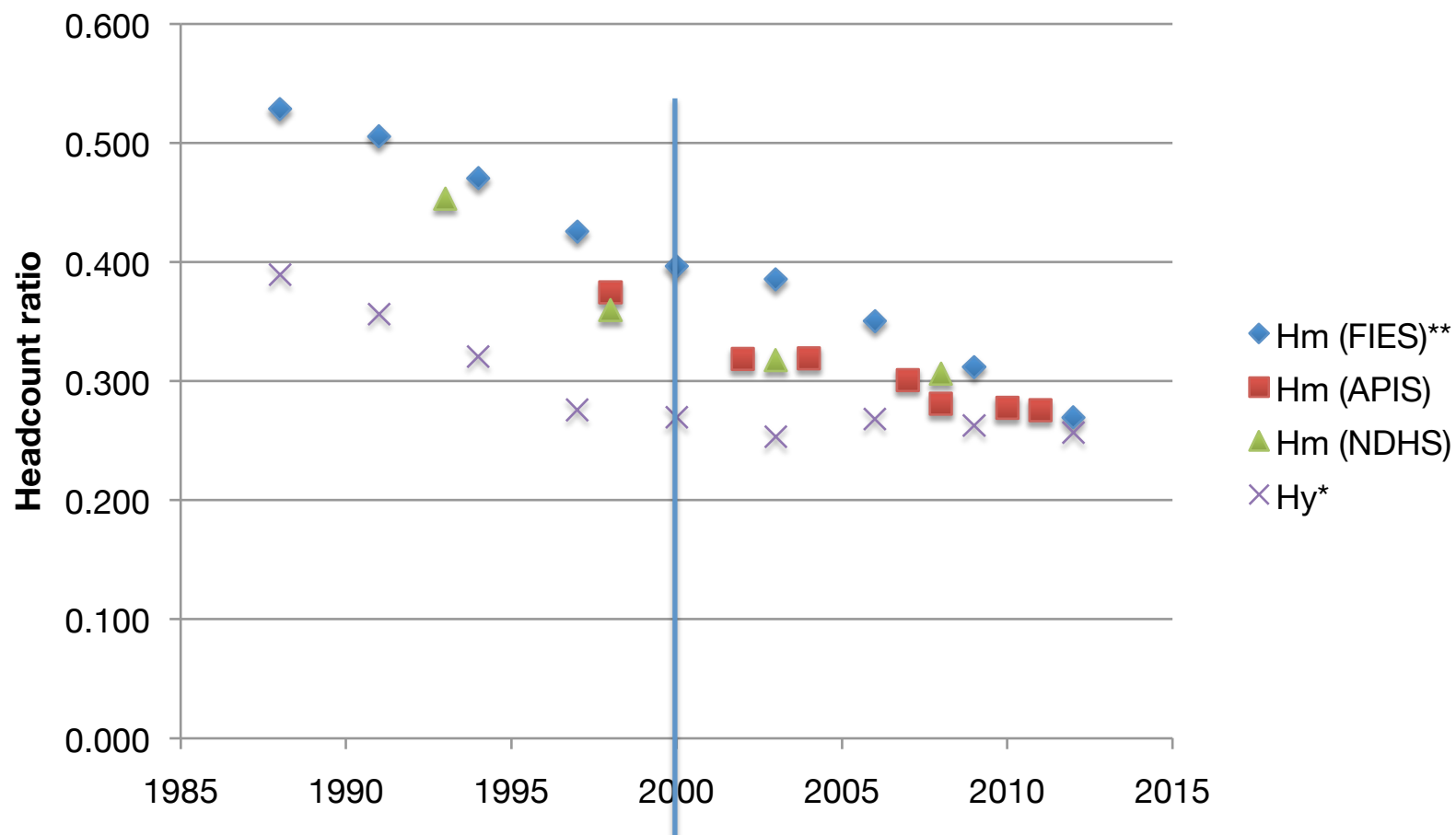
Source: Balisacan(2014) What has really happened to poverty in the Philippines?
and Edillon(2014), Multidimensional Poverty

Achievement (Deprivation) Dimensions

	NDHS	FIES	APIS
HEALTH			
Child Mortality	✓		
Water		✓	✓
Sanitation		✓	✓
Nutrition			
Food poverty	✓ ^a	✓	✓
EDUCATION			
Years of Schooling	✓	✓	✓
Child School Attendance	✓		✓
Potential Schooling		✓	
STANDARD OF LIVING			
Electricity	✓	✓	✓
Shelter			
Flooring	✓		
Roof		✓	✓
Wall		✓	✓
Mobility			
Access to motor vehicles	✓	✓	
Access to national roads		✓	
Asset ownership			
Household Assets	✓	✓	✓
Transport			✓
House tenure			✓
Other sources of income		✓	✓

Source: Balisacan(2014) What has really happened to poverty in the Philippines?
and Edillon(2014), Multidimensional Poverty

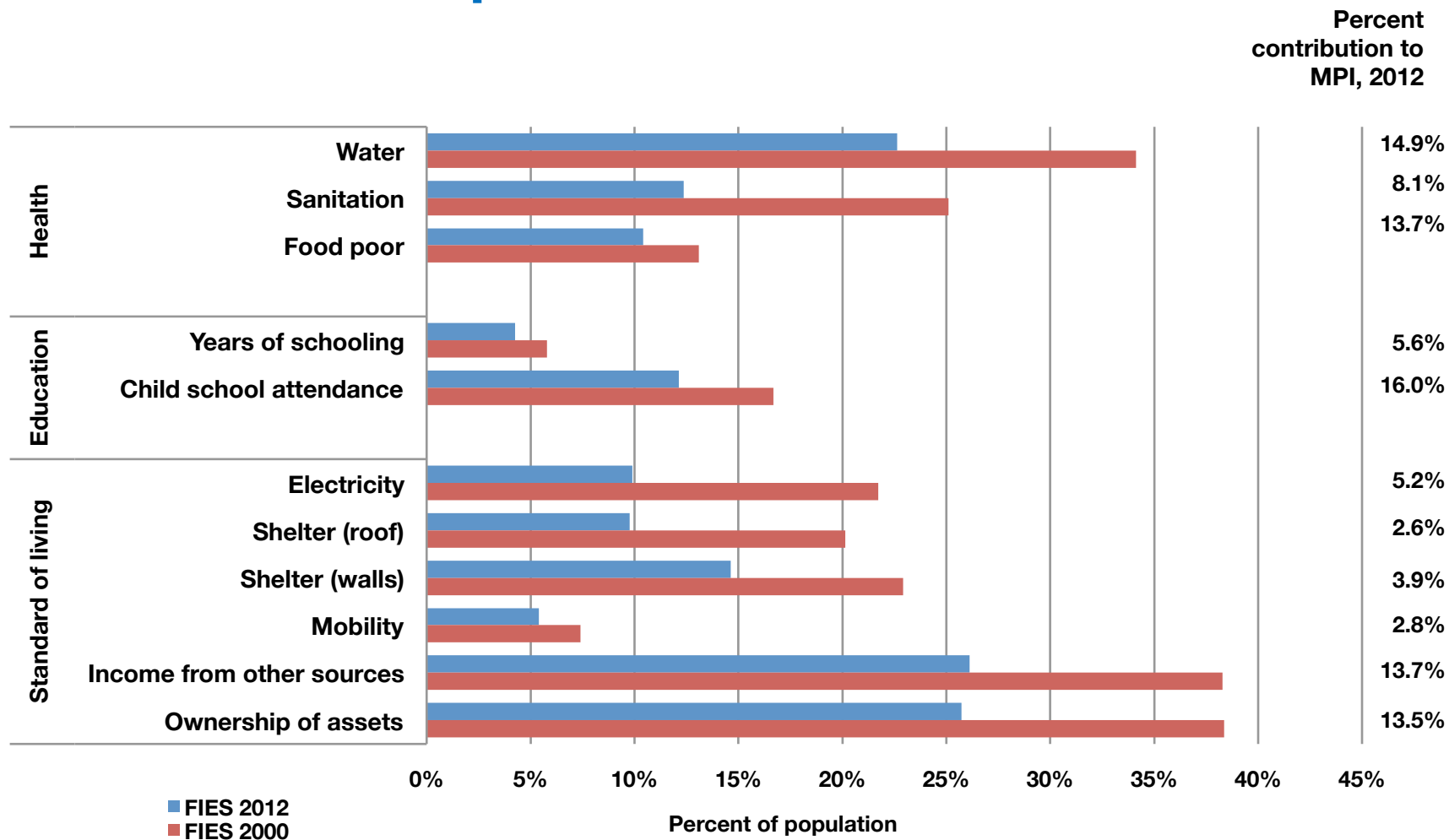
Multidimensional Headcount (H_m) vs. Income Headcount (H_y)



*Uses official per capita food poverty threshold for 2009 (among families).

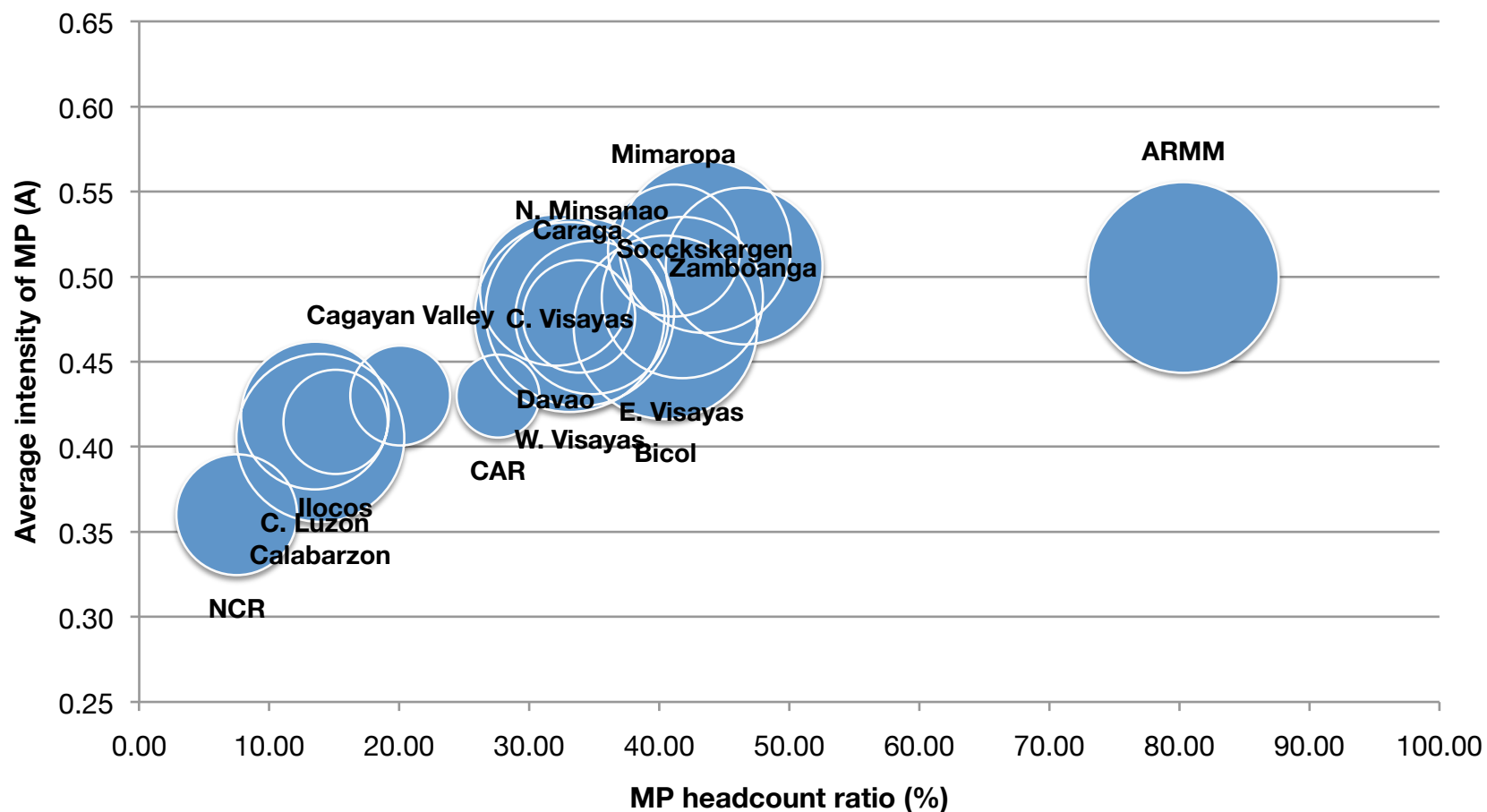
**Note: Line indicates that before 2000 the FIES-generated MPI uses a different definition of assets.

Percentage of population who are MPI poor and deprived in each indicator



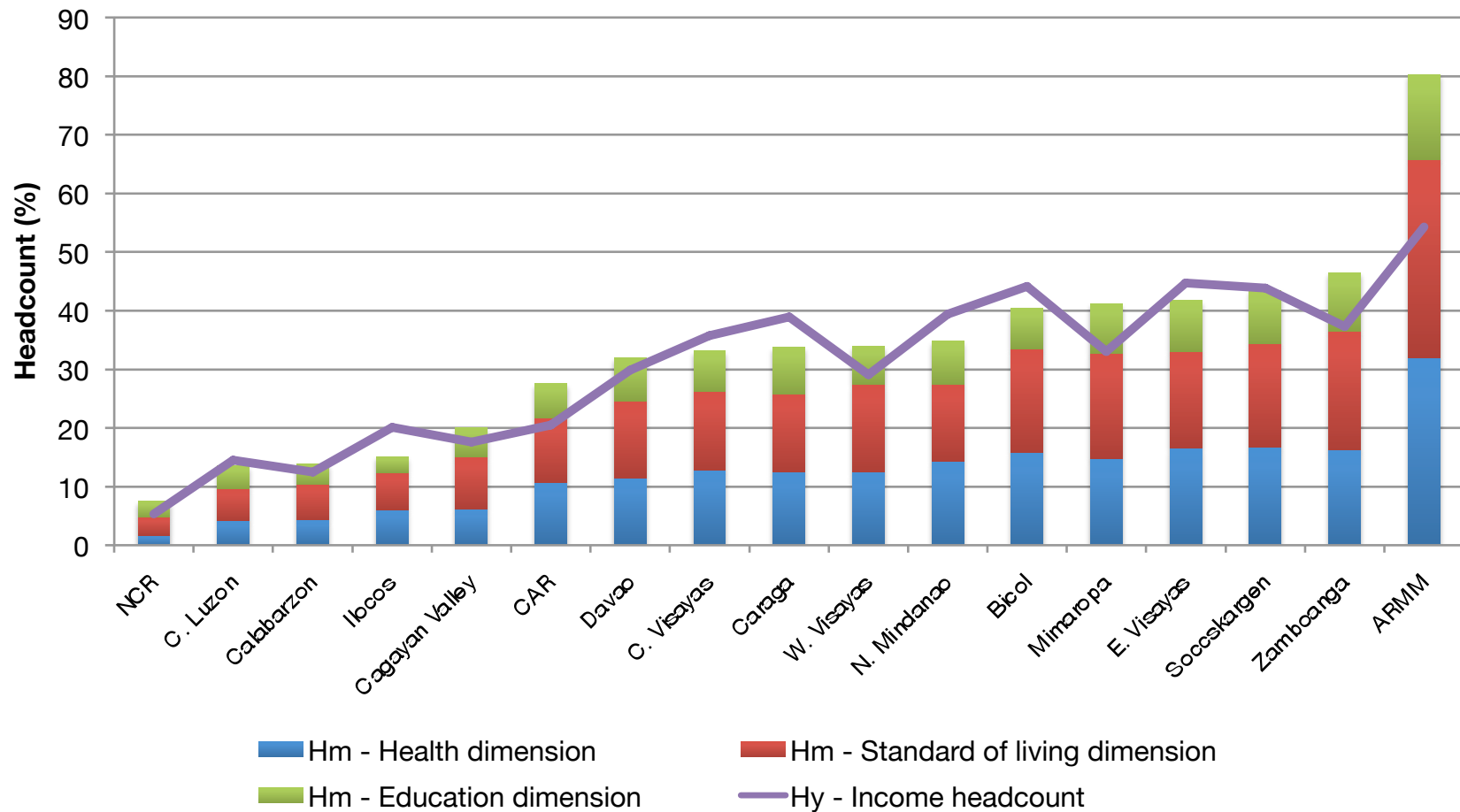
Source: Balisacan(2014) What has really happened to poverty in the Philippines?
and Edillon(2014), Multidimensional Poverty

Intensity & headcount of multidimensional poverty, by region, FIES 2012



Source: Balisacan(2014) What has really happened to poverty in the Philippines?
and Edillon(2014), Multidimensional Poverty

Multidimensional headcount (H_m) vs. Income headcount (H_y), FIES 2012



Source: Balisacan(2014) What has really happened to poverty in the Philippines?
and Edillon(2014), Multidimensional Poverty

Moving Forward

- Study to start in March 2015 on enhancing household surveys including development of an integrated household survey for a comprehensive framework for poverty measurement in the Philippines
- Need a communication plan for the comprehensive framework
- For review and endorsement of the technical committee

- Thank you!