



GOBIERNO DE LA REPÚBLICA DE  
**PANAMÁ**

# MULTIDIMENSIONAL POVERTY INDEX

PANAMA

2017

Process and results of Panama's first MPI



# OBJETIVOS DE DESARROLLO SOSTENIBLE

“La necesidad de una mirada multidimensional de la pobreza y las privaciones guían la búsqueda de un adecuado indicador de pobreza humana”

**SUDHIR ANAD Y  
AMARTYA SEN**



## PROÓSITO

Poner fin a la pobreza en todas sus formas y dimensiones en todo el mundo.

To **identify** and **measure** the incidence and intensity of the main non-monetary deprivations affect living conditions of the panamanians, and use it as a public policy tool to redirect actions in order to effectively reducee poverty in all its dimensions.

**PANAMÁ  
PARA TODOS  
CERO POBREZA**

# Panama's MPI Development Process

2016

2017

MAY

JUNE - OCTOBER

NOVEMBER -  
DECEMBER

JANUARY - MAY

JUNE



Roadmap

- ▶ Technical Advisory Committee



Data Source

- ▶ Dimensions and indicators
- ▶ Training in AF Methodology



Survey modification

- ▶ CONSULTATION: Communities in every province and indigenous areas



Survey application

- ▶ Data base development
- ▶ Experts' table



MPI Calculation

- ▶ Forums and workshops
- ▶ Certification of validity
- ▶ Panama's MPI Launch

SOCIAL CABINET - TECHNICAL ADVISORY COMMITTEE - EXPERTS' TABLE

# INSTITUTIONALITY



**SOCIAL CABINET**



**TECHNICAL SECRETARY**



**MULTISECTOR COMMISSION**



**MPI TECHNICAL ADVISORY COMMITTEE**

- ▶ MINISTRY OF SOCIAL DEVELOPMENT
- ▶ MINISTRY OF ECONOMY & FINANCE  
Social and Economic Analysis Direction
- ▶ INSTITUTE OF NATIONAL STATISTICS

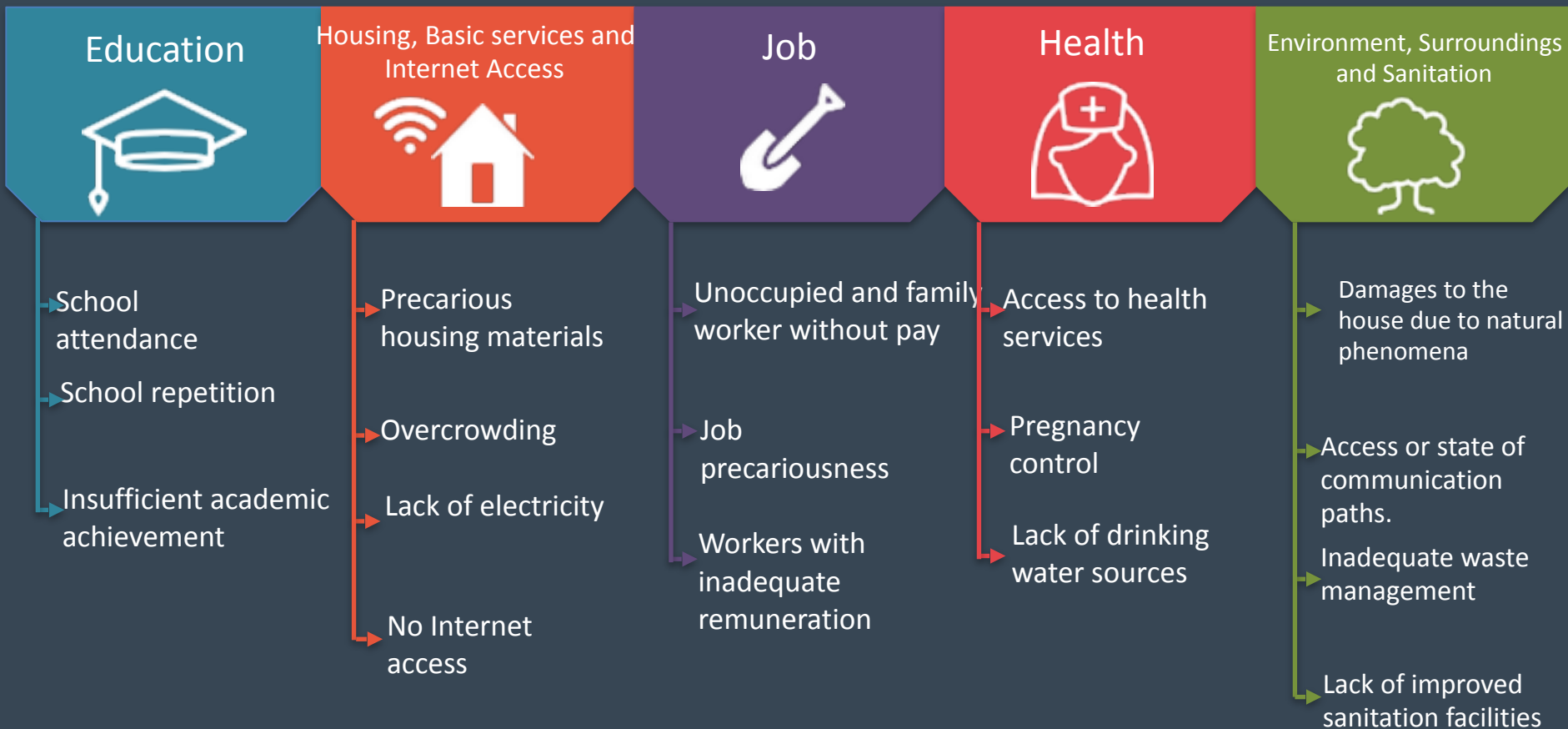


**EXPERTS TABLE**  
OPHI | UNDP | WB

# Which dimensions of well-being are considered by Panama's MPI?

Panama's PMI has **5 dimensions** and **17 indicators**.

With the MPI we can determine which deprivations affect people the most.



# When is a household or an individual considered multidimensionally poor?

## Education



- School attendance
- School repetition
- Insufficient academic achievement



## Housing, Basic services and Internet Access



- Problems with housing materials
- Overcrowding
- Lack of electricity
- No Internet access



## Job



- Unoccupied and family worker without pay
- Job precariousness
- Workers with inadequate remuneration



## Health



- Access to health services
- Prevalence of communicable diseases
- Lack of drinking water sources



## Environment, Surroundings and Sanitation



- Damage to the household due to natural phenomena
- Access or state of communication paths.
- Inadequate waste management
- Lack of improved sanitation facilities



When a household is deprived in at **5, 6 or more** of the weighted indicators, it is considered **multidimensionally poor**.

# RESULTS



## HOW MANY PEOPLE ARE POOR? (INCIDENCE)

**19.1%** of Panamanians live in multidimensionally poor conditions, which means that 2 out of 10 panamanians are deprived either on their education, health, housing, job, or other dimensions of their well being.

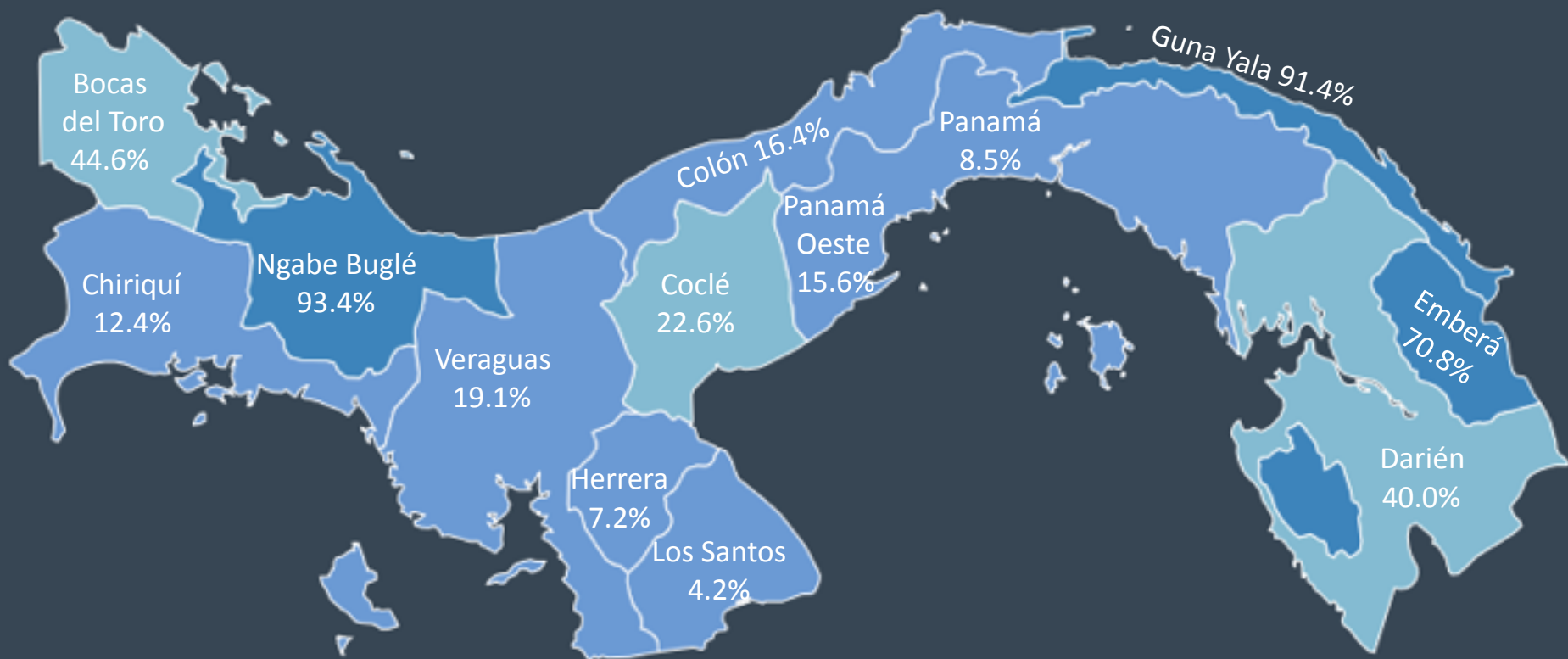


**INTENSITY: 43.5%**

On average, poor people in Panama are deprived on 8 or more indicators simultaneously, depending on the dimension.

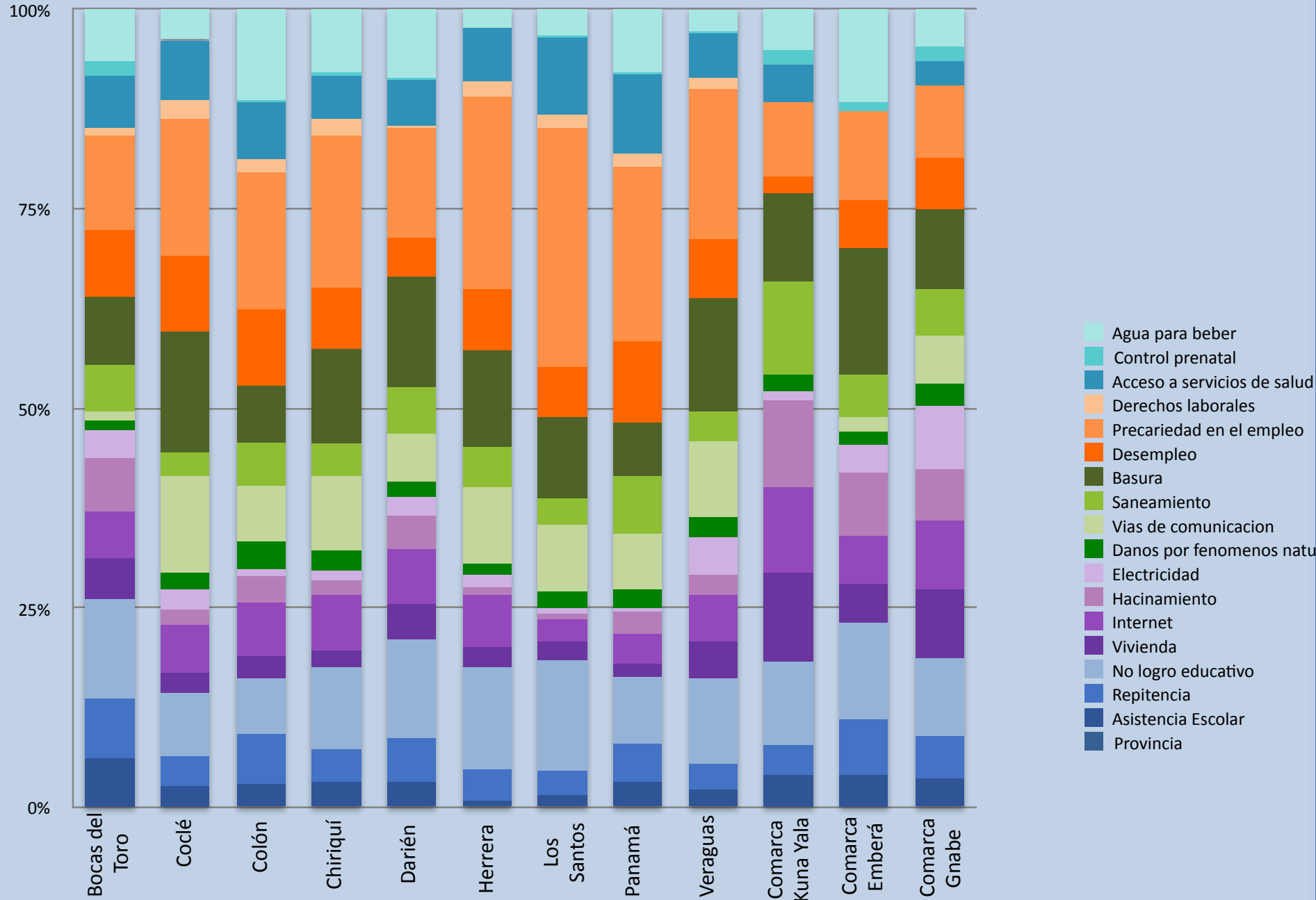


# Incidence of Multidimensional Poverty, by province and indigenous territory



Source: Multiple Purposes Survey, March 2017, INEC

# Percentage contribution of each indicator, by province and indigenous areas



# How can Panama use the MPI to reduce poverty?



## POLICY TOOL

Quick wins | Goals alignment | Policy Analysis  
*Platform civil society participation & proposals*



**PANAMA FOR ALL-0 POVERTY** | Cabinet Decree  
*targetting, coordination & integration*



**NATIONAL STATISTICS SYSTEM**—Statistical Units  
MPI & SDGs



**OFFICIAL POVERTY MEASURE** | Cabinet Decree  
periodicity | source | institutionality |  
dimensions & indicators

"A multidimensional approach to measure poverty reflects in a better way population conditions because it is not only based on family income but also in other dimensions like health, education and living conditions.

The index acts as a high resolution lens that allows you to see the intensity of the poverty of each individual and their specific deprivations."

**—SABINA ALKIRE  
DIRECTOR, PHI**

A stylized world map in shades of blue and white, centered on the Americas, serves as the background for the text.

**PANAMÁ**  
**PARA TODOS**  

---

**CERO POBREZA**

# EJE ARTICULADOR



**PROMOTOR ÚNICO  
(FAMILY)**



**FAMILY PLAN**  
Social Protection Survey



**LOCAL SOCIAL CABINET  
(DISTRICT)**



**TERRITORIAL  
DEVELOPMENT PLAN**



**SOCIAL CABINET  
(NATIONAL)**

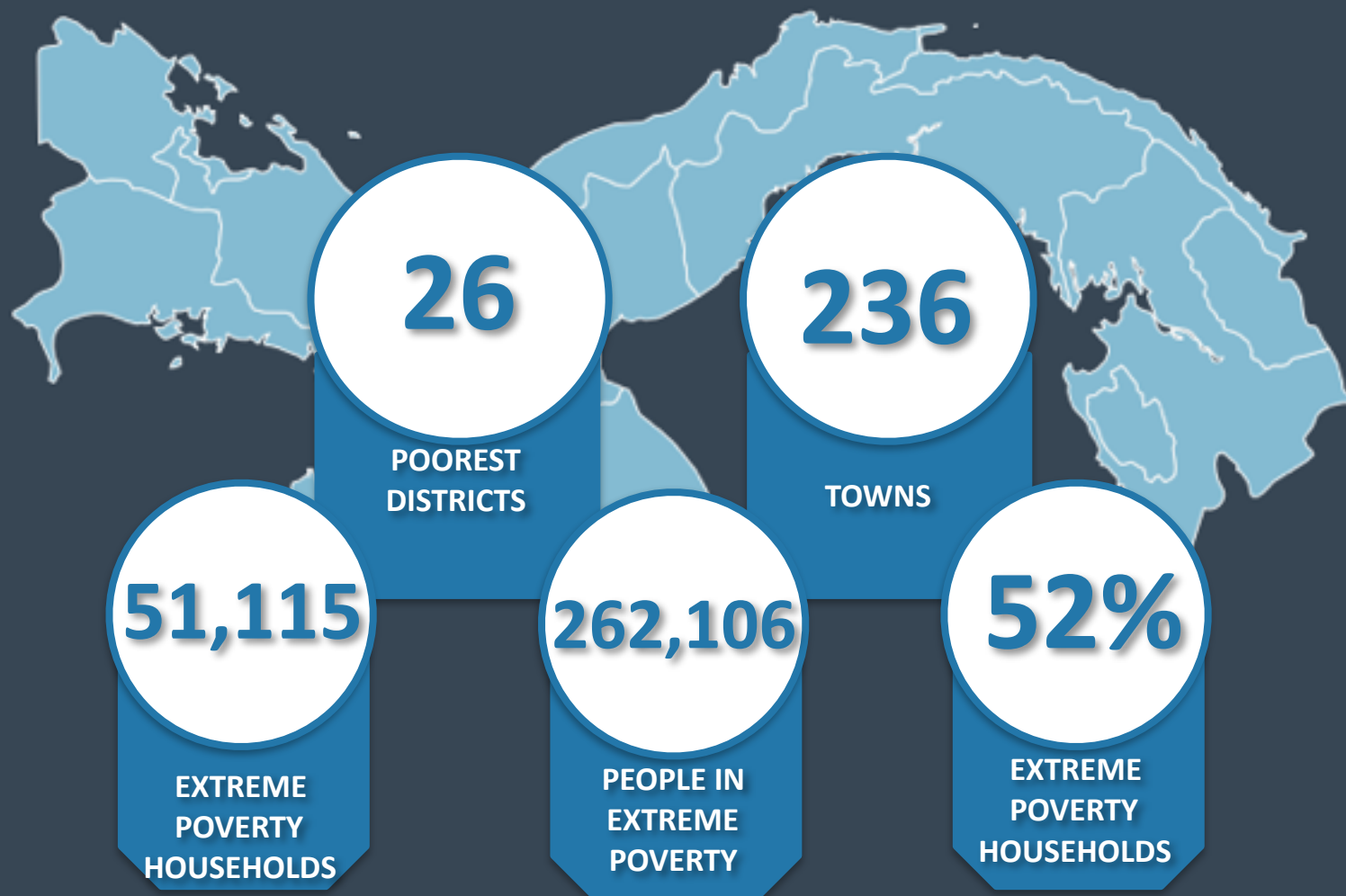


**PANAMA FOR ALL - 0  
POVERTY**

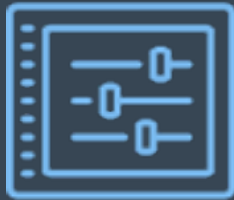
**INTEGRATED PACKAGE OF  
SOCIAL SERVICES & PROGRAMS**



# FOCALIZACION



# NEXT STEPS



Control board  
for MPI's indicators



Public Policy  
Agenda



Partnerships for the  
fight against poverty



Children's MPI



Ethnographic study for  
indigenous populations