

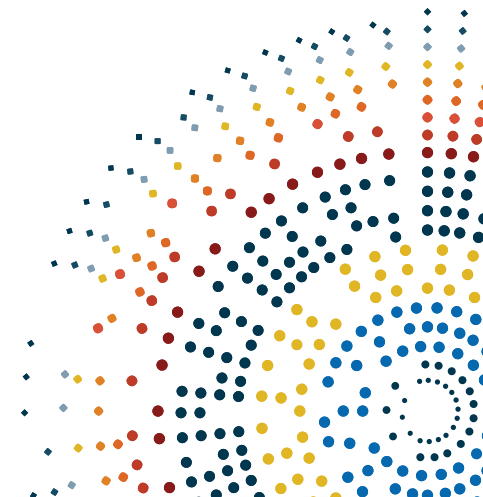
**Leveraging the Transformative Power of Official Multidimensional Poverty
Statistics for Social Development**

Webinar, 30 April 2025

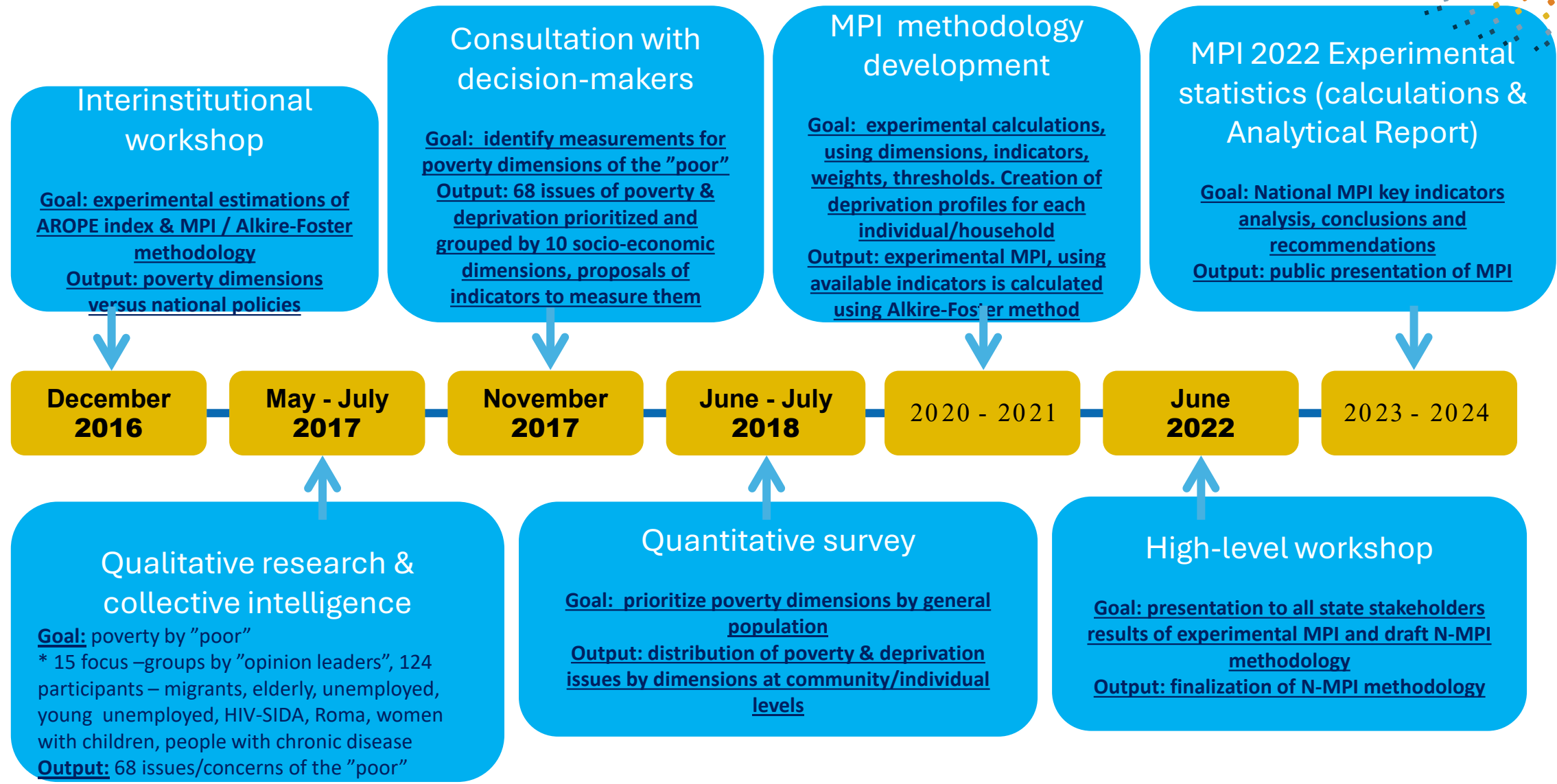
National Multidimensional Poverty Index in the Republic of Moldova

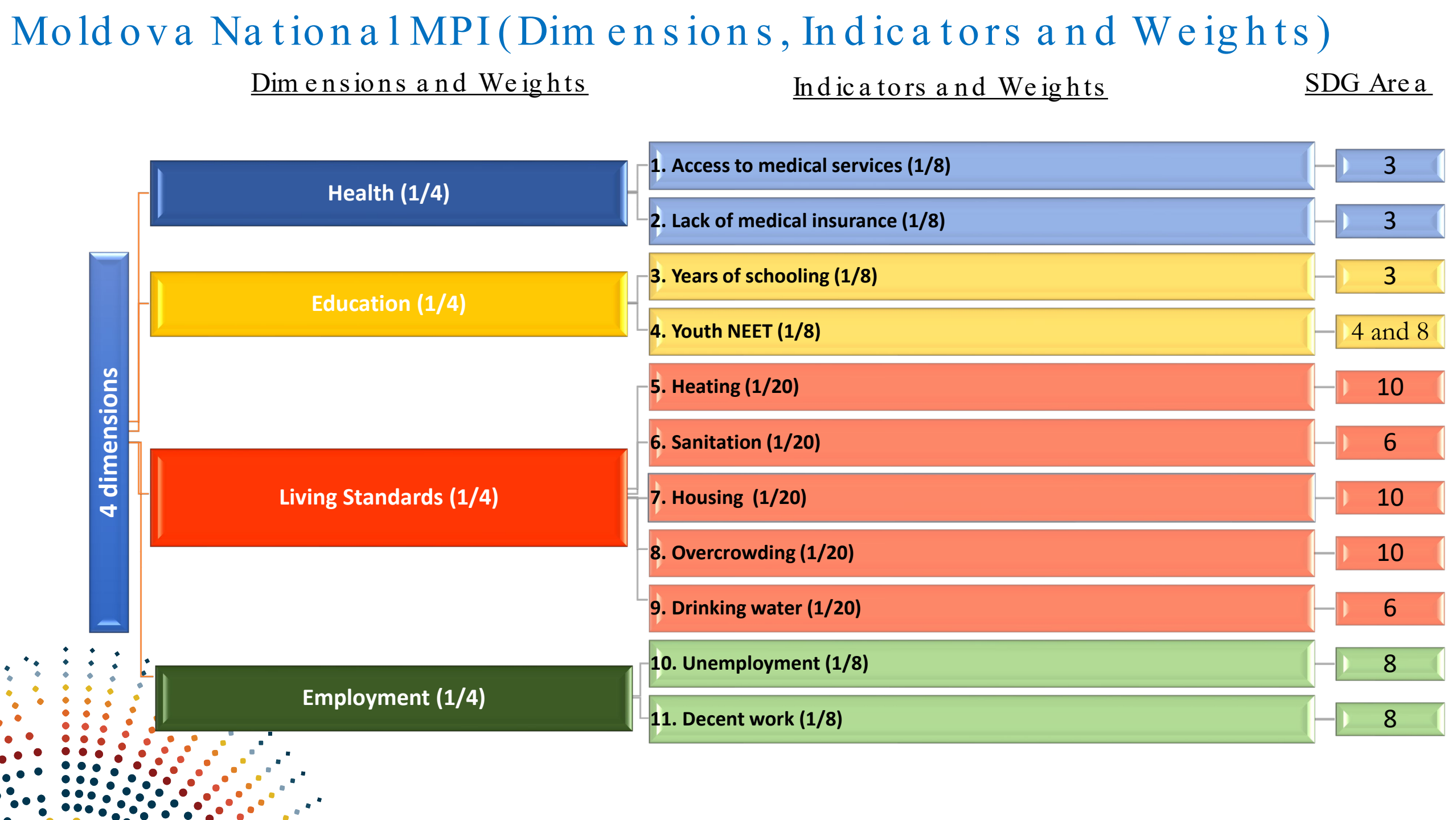
Oleg CARA

Director General, National Bureau of Statistics of the Republic of Moldova



Process of designing a national MPI





Data source – Household Budget Survey

The main objectives of HBS

- i) measures of living standards,
- ii) consumption and income structure,
- iii) weights for consumer price indexes and
- iv) various estimates for the National Accounts.

Periodicity annual (with monthly data collection)

Sample size – 12600 households per year

Data collection method:

- CAPI (face to face interview) and self recording of diary

Survey tools:

- Household roster: socio and demographic characteristics, education, employment, housing, land etc.
- Diary: income, expenditure (cash, in-kind)

What goods and services do households buy?



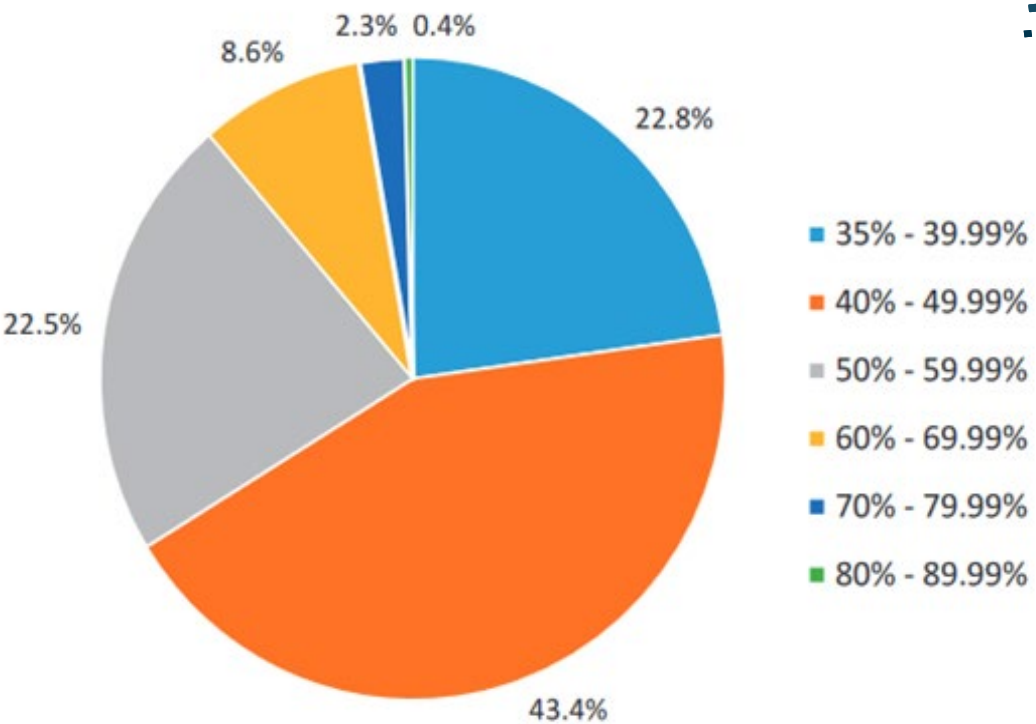
Measuring Multidimensional Poverty in Moldova

Incidence, intensity and value of MPI, 2022

Poverty Cutoff (k)	Index	Value
k-value=35%	Incidence (H), %	27.5
	Intensity (A), %	46.5
	MPI ($M_0 = H \cdot A$)	0.128

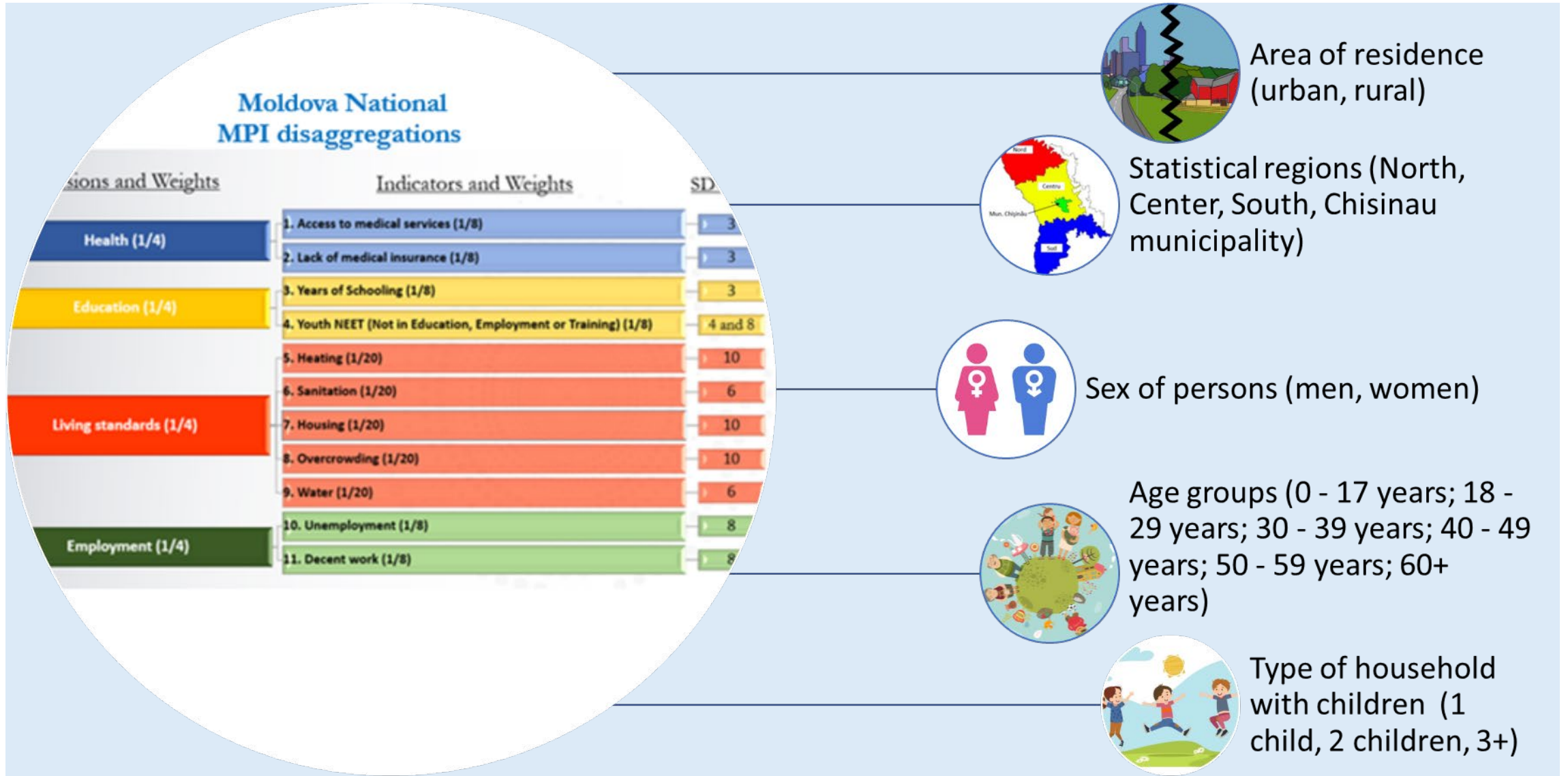
Source: NBS, HBS 2022

Intensity gradient among the poor, 2022



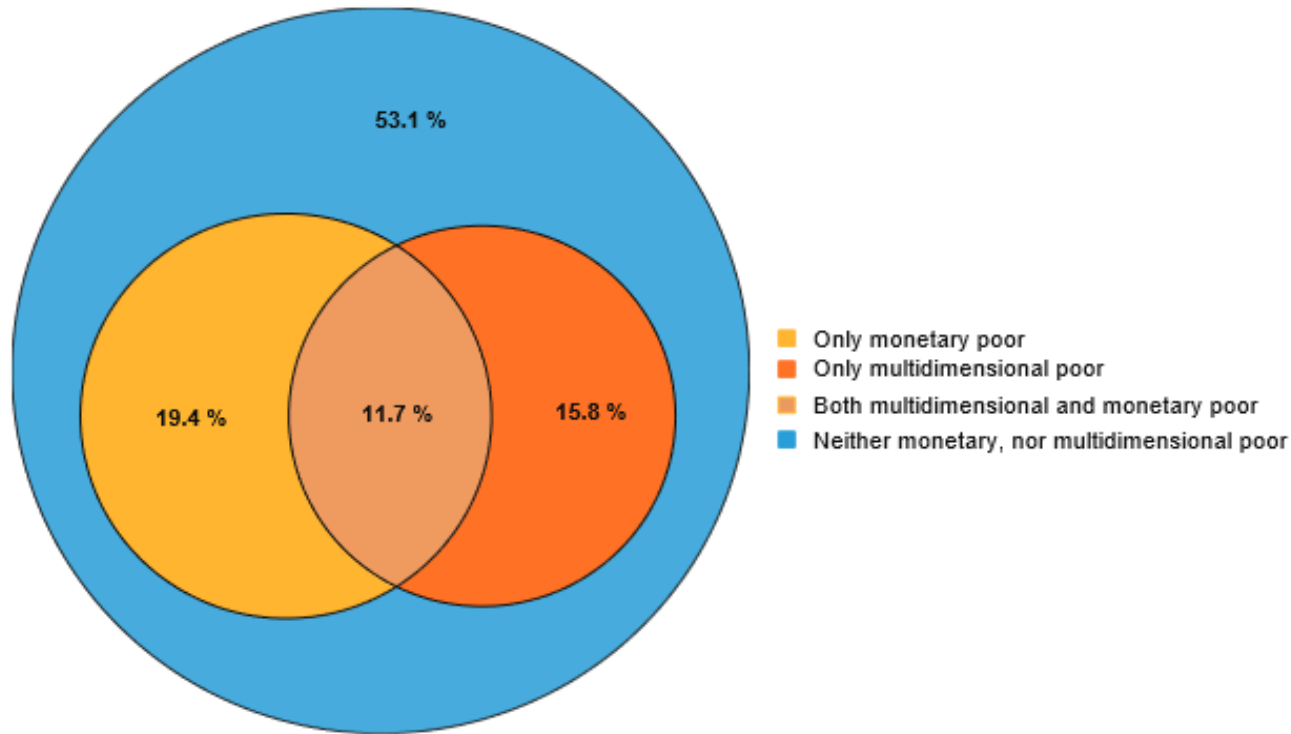
SOURCE: Authors' calculations based on data from 2022 HBS.

Moldova National MPI disaggregation



Multidimensional Poverty and Monetary Poverty

Overlap between Monetary and Multidimensional poverty rates, 2022



- Monetary poverty = Absolute poverty rate
- Government Decision No. 851/2005 regarding the creation of the system for monitoring and evaluating poverty
- 2006 up to now – Absolute poverty rate calculated by NBS based on HBS data

Next steps

- Calculating the national MPI regularly as part of the Annual Statistical Work Plan approved by the Government
- Dissemination of MPI on the [Platform dedicated to the Sustainable Development Goals \(SDGs\)](#) indicators: <https://statistica.gov.md>
- In May 2025: press release "Analysis of changes in the MPI in 2022-2024"



1.2 By 2030, reduce at least by half the proportion of men, women and children of all ages living in poverty in all its dimensions according to national definitions

1.2.1 [Proportion of population living below the national poverty line, by sex and age](#)

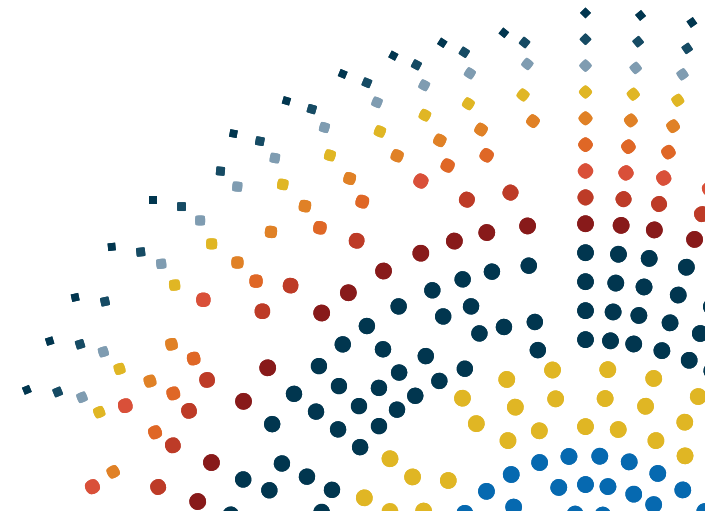
Available

1.2.2 [Proportion of men, women and children of all ages living in poverty in all its dimensions according to national definitions](#)

Not available



End poverty in all its forms everywhere



THANK YOU !

