



**NATIONAL STATISTICAL COMMITTEE
OF THE REPUBLIC OF BELARUS**

NATIONAL MULTIDIMENSIONAL POVERTY INDEX: METHODOLOGICAL CALCULATION APPROACHES

27 – 29 August 2024, Tashkent, Uzbekistan
9th Annual High-Level Meeting

Elena Kukharevich

National Statistical Committee of the
Republic of Belarus

POVERTY INDICATORS IN THE REPUBLIC OF BELARUS



1.1.1. Proportion of the population living below the international poverty line



1.2.1. Proportion of the population of the country living below the national poverty line



10.2.1. Proportion of people living below 50 per cent of median income



1.2.2. Proportion of men, women and children of all ages living in poverty in all its dimensions according to national definitions
(is being developed)



PRINCIPLES IN THE DEVELOPMENT OF THE NATIONAL MULTIDIMENSIONAL POVERTY INDEX

- 1** Relevance and significance of the index and its components for the Republic of Belarus
- 2** Consistency for international comparative analysis
- 3** Availability of relevant statistical data required for calculation



INDICATORS OF THE GLOBAL MULTIDIMENSIONAL POVERTY INDEX IN THE REPUBLIC OF BELARUS

Measurement area	Indicator	Deprivation threshold	Availability of information
Health	Nutrition	At least one adult or child in the household is undernourished	–
	Child mortality	At least one child in the household has died in the last 5 years	–
Education	Years of schooling	No one in the household has 5 years of schooling	–
	Enrollment of children in education	At least one school-age child is not attending school	–
Living conditions	Access to electricity	Household has no electricity	0%
	Access to sewerage	Household has no access to sewerage	<1%
	Access to clean drinking water	Household has no access to clean drinking water	0%
	Type of floor material	Household has an earthen floor (sand, clay, etc.)	0%
	Type of cooking fuel	Household uses “dirty” fuel for cooking (firewood)	<1%
	Asset ownership	Household does not own a car (truck) and has only one of the following: bicycle, motorcycle, radio, refrigerator, telephone, TV set.	+



STAGES IN THE DEVELOPMENT OF THE NATIONAL MPI

Analysis of program and strategic documents

1. National Strategy for Sustainable Development of the Republic of Belarus until 2035
2. Program of Socio-Economic Development of the Republic of Belarus for 2021-202
3. State programs for 2021-2025:
 - «Education and youth policy»;
 - «Public health and demographic security»;
 - «Labour market and employment promotion», etc.

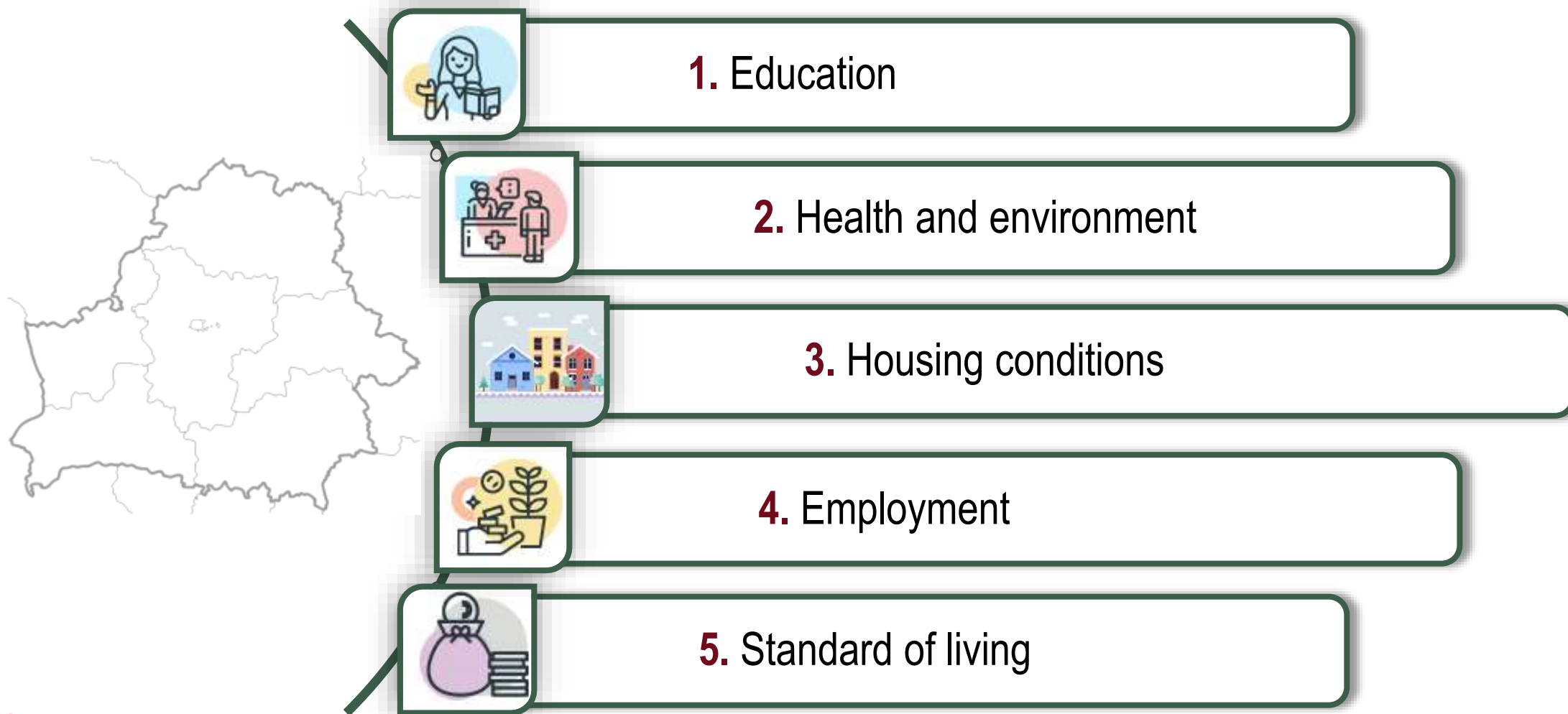
Consultations with specialists from key public administration bodies

1. Ministry of Labour and Social Protection
2. Ministry of Economy
3. Ministry of Health
4. Ministry of Education



MEASUREMENT AREAS FOR THE NATIONAL MULTIDIMENSIONAL POVERTY INDEX

(based on program documents and data from HSS)

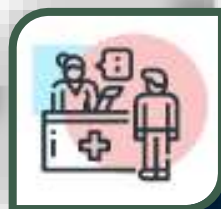


INDICATORS FOR THE NATIONAL MULTIDIMENSIONAL POVERTY INDEX



Education:

- educational attainment at 18 years of age and above



Health and environment:

- disabilities
- access to health care
- unfavorable environment



Housing conditions:

- housing constraints
- access to water and sewerage



Employment:

- labor market participation
- access to decent work

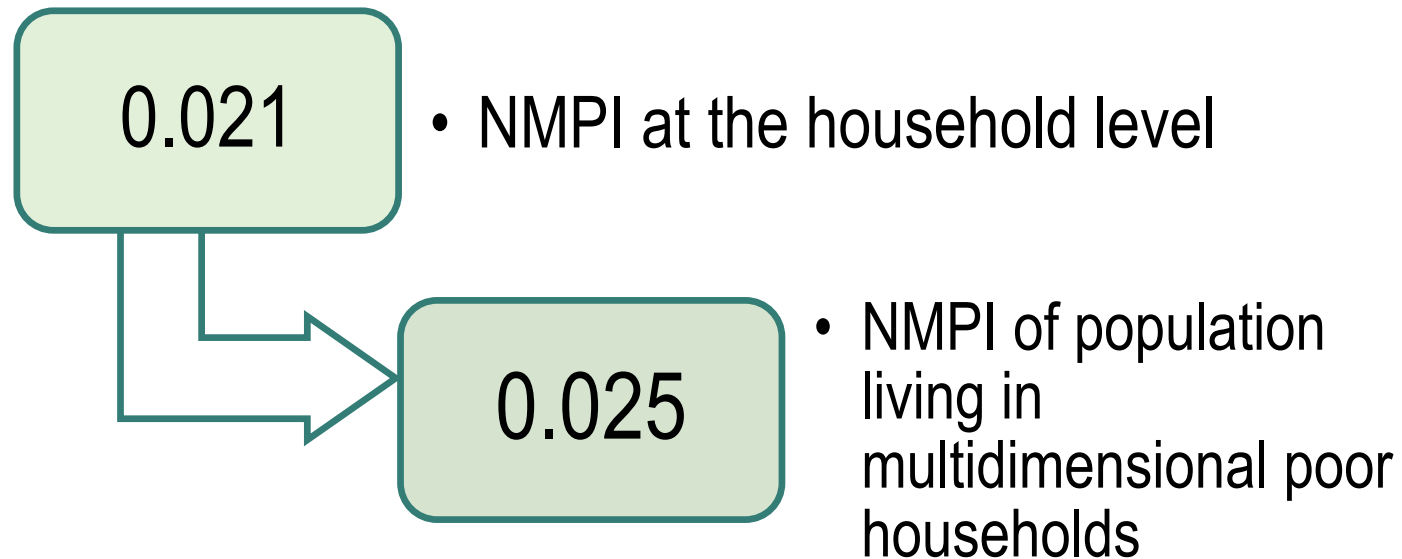


Standard of living:

- financial assets
- payments arrears
- Internet access



EXPERIMENTAL CALCULATIONS OF THE NATIONAL MULTIDIMENSIONAL POVERTY INDEX in 2023 (poverty threshold - 1/3 or 33.33%)





THANK YOU FOR YOUR ATTENTION!



**NATIONAL STATISTICAL COMMITTEE
OF THE REPUBLIC OF BELARUS**

<https://www.belstat.gov.by/>